

N-Channel 30V (D-S) MOSFET

V_{DS}	$R_{DS(on)MAX}$	I_D
30V	60 mΩ@10V	5.8
	42 mΩ@4.5V	5.4

Features

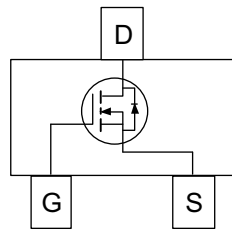
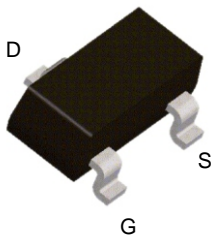
- Low Gate Charge
- RoHS Compliant

Applications

- DC/DC Converters, High Frequency Switching
- Load Switch

Pin Configuration

SOT23-3L



Packing Information

Device	Marking	Reel Size	Tape Width	Quantity
EC2366	13D .XXX	7"	8mm	3000pcs

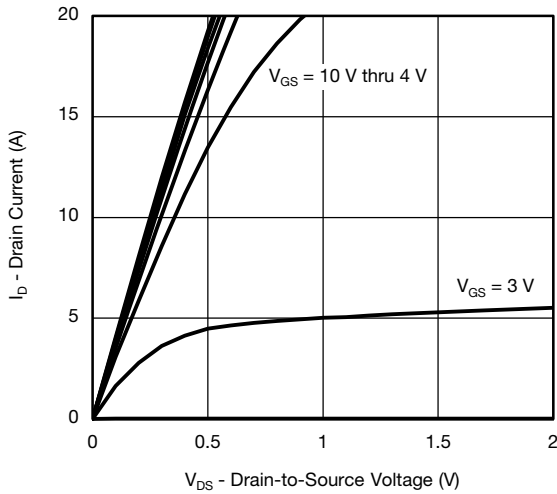
Absolute Maximum Ratings (T_J=25 °C Unless Otherwise Noted)

Symbol	Parameter	Value	Unit
V_{DS}	Drain-Source Voltage	30	V
V_{GS}	Gate-Source Voltage	±20	V
I_D	Drain Current -Continuous	5.8	A
I_{DM}	Drain Current - Pulse	20	A
Power Dissipation, Temperature and Thermal Resistance			
P_D	Power Dissipation	2.1	W
$R_{\theta JA}$	Thermal Resistance from Junction to Ambient (note1)	100	°C/W
	Thermal Resistance from Junction to Ambient (note2)	140	°C/W
T_j	Junction Temperature	150	°C
T_{stg}	Storage Temperature	-55~+150	°C
T_L	Lead Temperature	260	°C

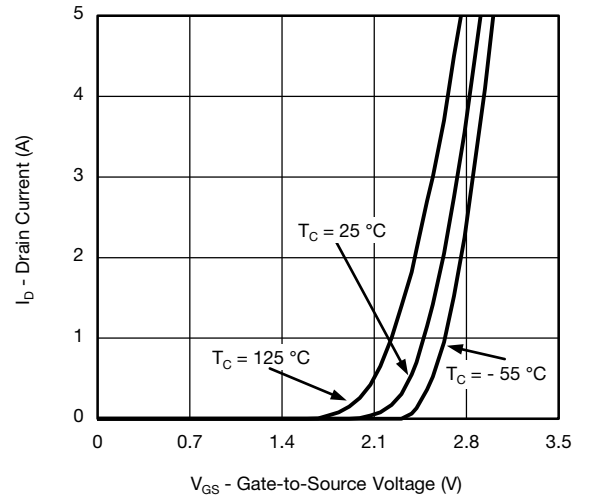
N-ch MOSFET ELECTRICAL CHARACTERISTICS (T_J=25°C unless otherwise specified)

Parameter	Symbol	Test conditions	Min	Typ	Max	Unit
Static						
Drain-source breakdown voltage	V _{(BR)DSS}	V _{GS} = 0V, I _D = -250μA	30			V
Zero gate voltage drain current	I _{DSS}	V _{DS} = 30V, V _{GS} = 0V			1	μA
Gate-body leakage current	I _{GSS}	V _{GS} = ±20V, V _{DS} = 0V			±100	nA
Gate threshold voltage	V _{GS(th)}	V _{DS} = V _{GS} , I _D = 250μA	1.2		2.5	V
Drain-source on-resistance	R _{DS(on)}	V _{GS} = 10V, I _D = 4.5A		30	36	mΩ
		V _{GS} = 4.5V, I _D = 4.2A		35	42	mΩ
Forward transconductance(note1)	g _{FS}	V _{DS} = 15 V, I _D = 4.5 A		13		S
Diode forward voltage	V _{SD}	I _S = 3.6 A, V _{GS} = 0V		0.85	1.2	V
Dynamic						
Input Capacitance	C _{iSS}	V _{DS} = 15V, V _{GS} = 0V, f = 1MHz		335		pF
Output Capacitance	C _{oSS}			78		
Reverse Transfer Capacitance	C _{rSS}			30		
Total Gate Charge	Q _g	V _{DS} = 15V, V _{GS} = 4.5V, I _D = 4.5A		3.2	5	nC
Gate-Source Charge	Q _{gs}			1.1		
Gate-Drain Charge	Q _{gd}			1.3		
Gate Resistance	R _g	f = 1MHz	0.7	3.5	7	Ω
Turn-on Delay Time	t _{d(on)}	V _{DD} = 15V, R _L = 4.2 Ω I _D ≈ 3.5A, V _{GEN} = 4.5V, R _g = 1Ω		32	48	ns
Rise Time	t _r			48	71	
Turn-Off Delay Time	t _{d(off)}			18	27	
Fall Time	t _f			20	30	

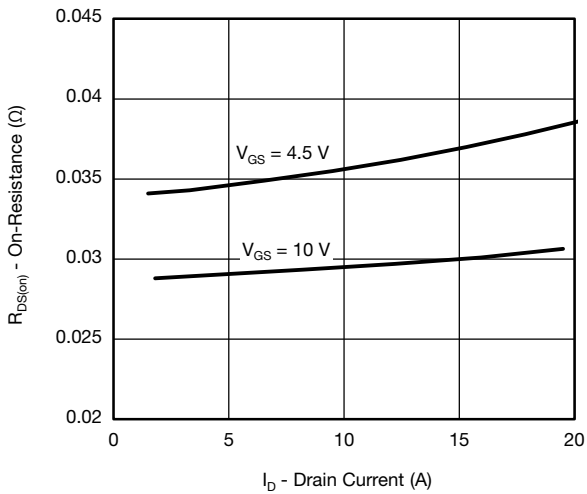
MOSFET TYPICAL CHARACTERISTICS(25°C, unless otherwise noted)



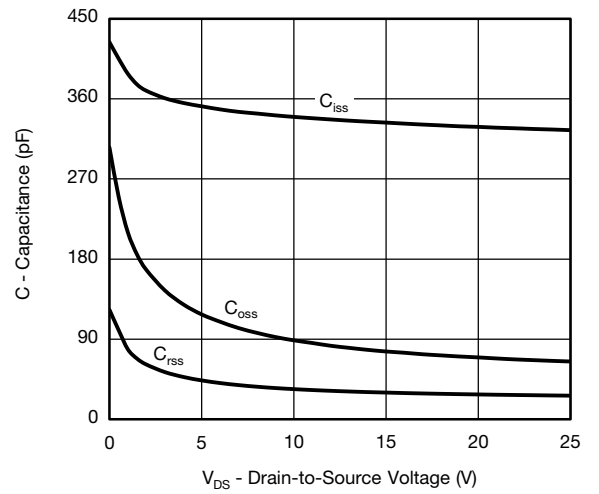
Output Characteristics



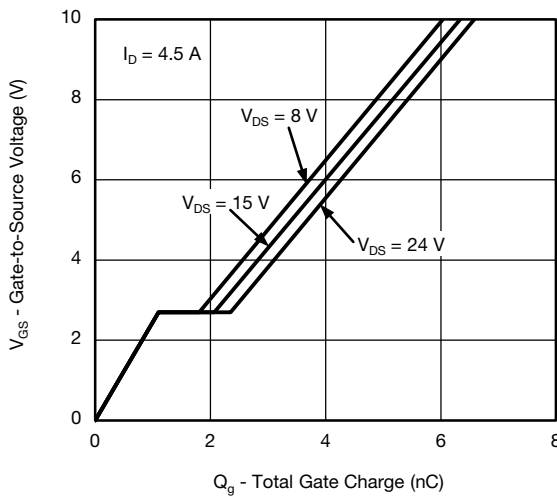
Transfer Characteristics



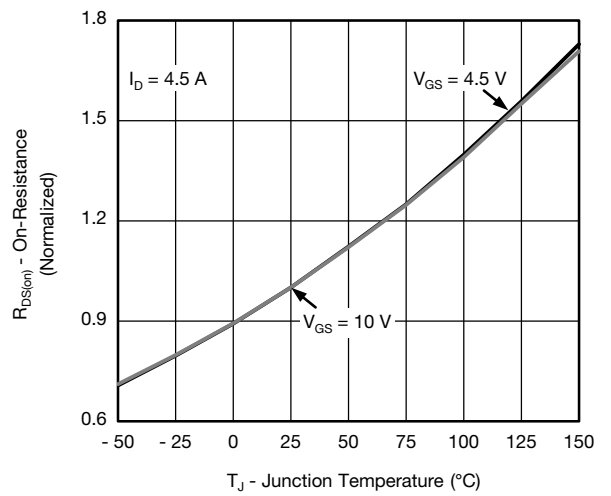
On-Resistance vs. Drain Current and Gate Voltage



Capacitance

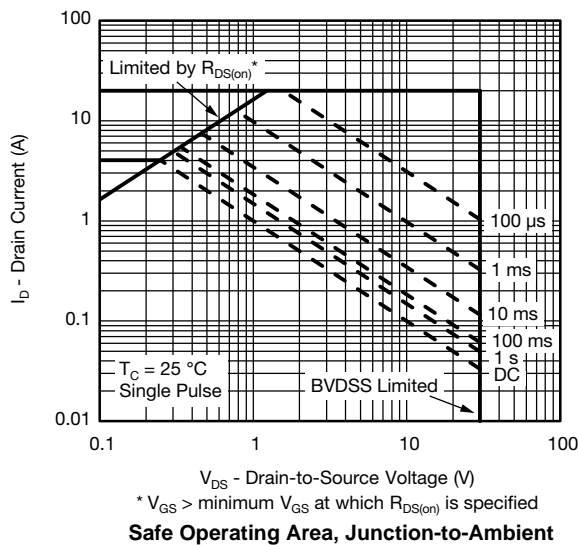
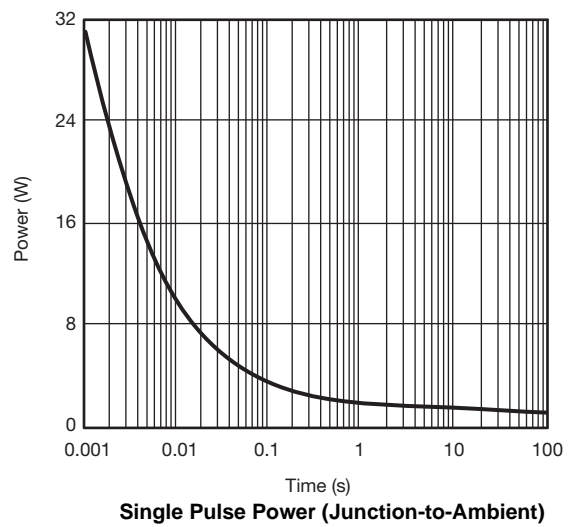
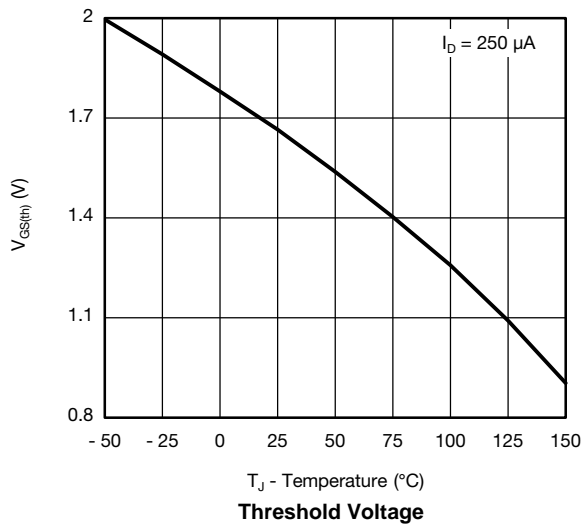
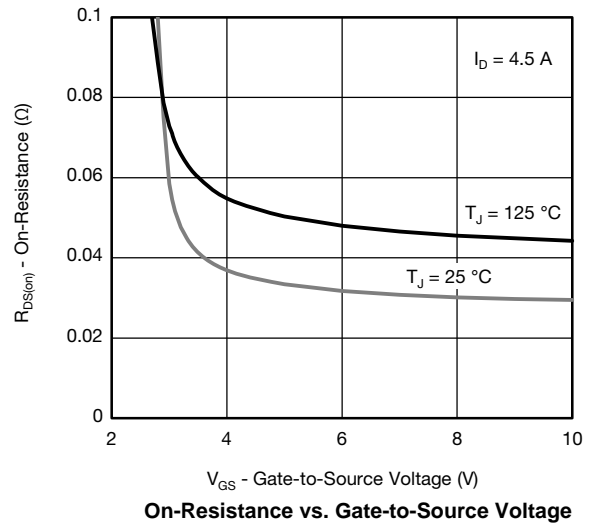
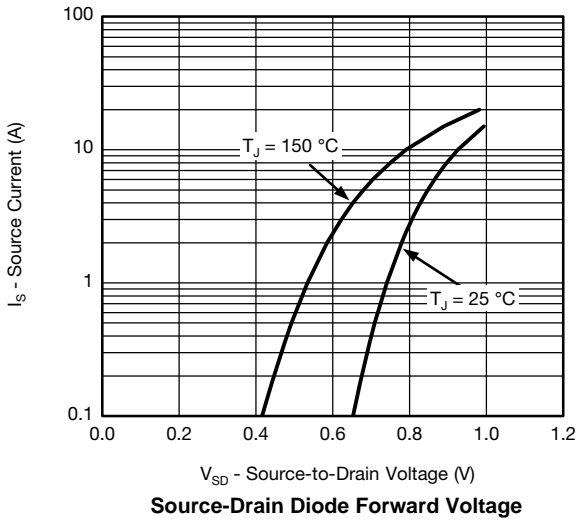


Gate Charge

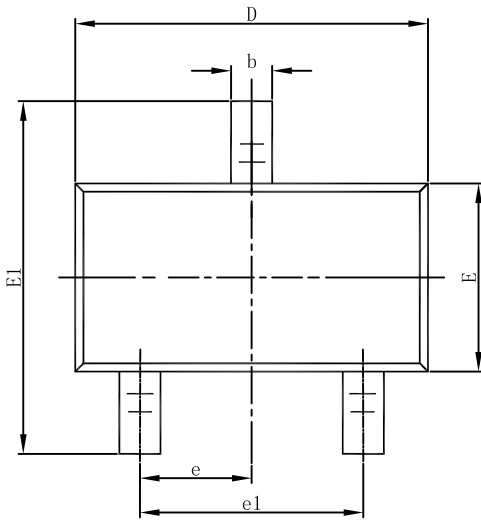


On-Resistance vs. Junction Temperature

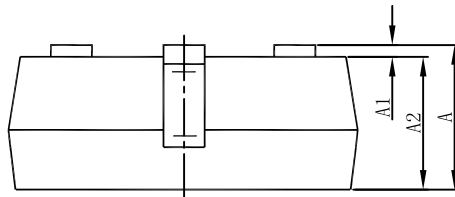
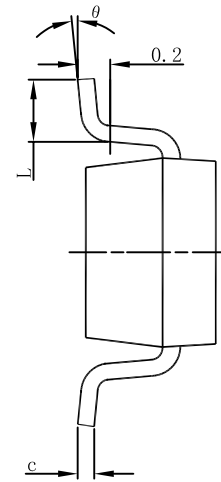
MOSFET TYPICAL CHARACTERISTICS(25°C, unless otherwise noted)



SOT23-3L Package Information



Top View



Side View

Symbol	Dimensions In Millimeters		Dimensions In Inches	
	Min	Max	Min	Max
A	1.050	1.250	0.041	0.049
A1	0.000	0.100	0.000	0.004
A2	1.050	1.150	0.041	0.045
b	0.300	0.500	0.012	0.020
c	0.100	0.200	0.004	0.008
D	2.820	3.020	0.111	0.119
E	1.500	1.700	0.059	0.067
E1	2.650	2.950	0.104	0.116
e	0.950(BSC)		0.037(BSC)	
e1	1.800	2.000	0.071	0.079
L	0.300	0.600	0.012	0.024
θ	0°	8°	0°	8°